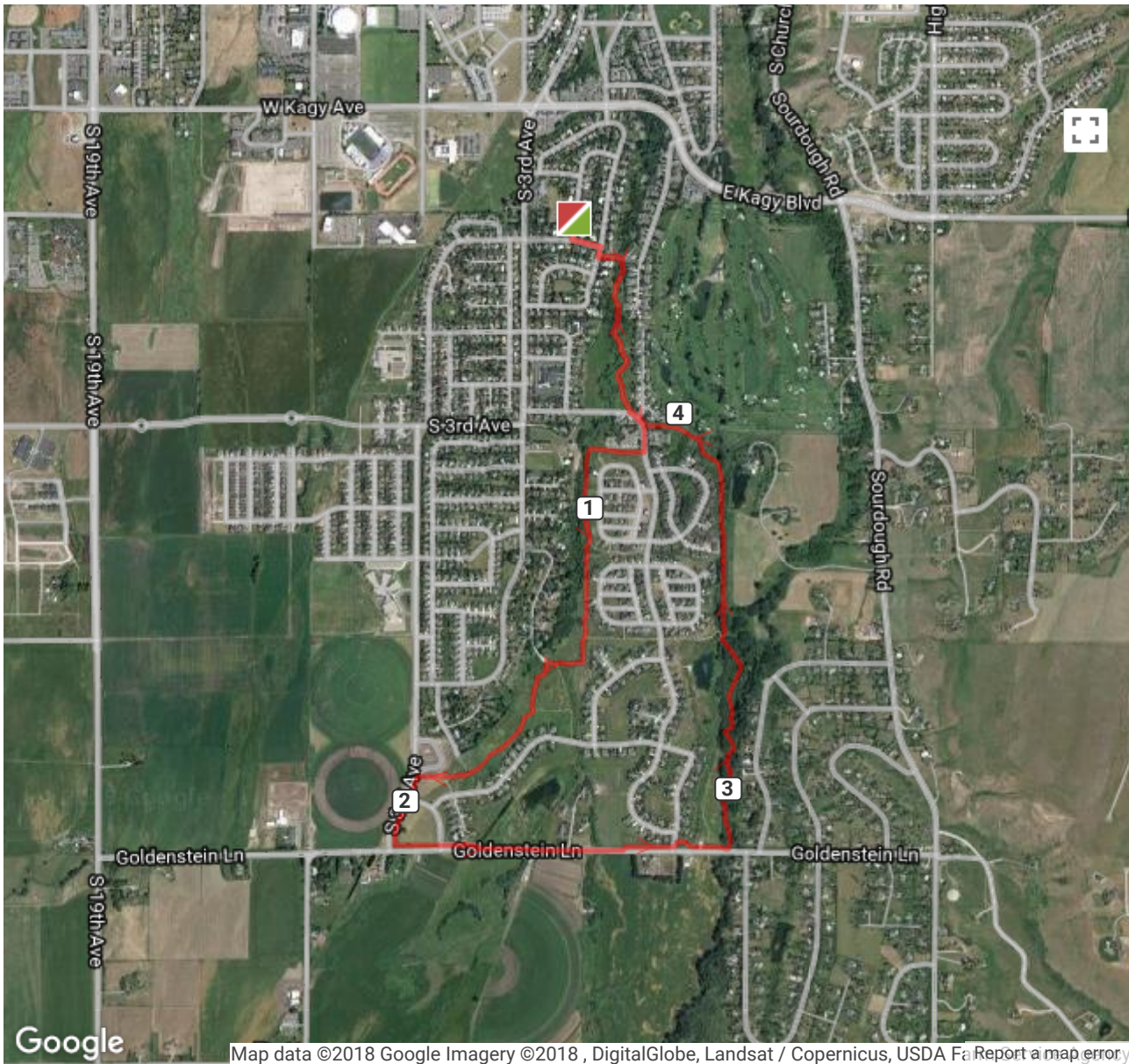


# mapometer - BSWD\_JackiMcGuireRun\_Long\_4\_7...



Distance  
**4.70** mi

ascent  
**0** m

descent  
**0** m

## Notes

Start on Highland Ct., even w/ S edge of Jacki's driveway. Go S thru Grafs Park, then counterclockwise west of Mathew Bird / Fieldview, SW to edge of S. 3rd, E on Goldenstein to Sourdough Trail, then N back to start. Measured at 4.7 miles.